

BARCOL-AIR REDLAW VAV EQUIPMENT

All Barcol-Air Redlaw VAV system components can be purchased new, existing equipment refurbished and/or converted from pneumatic to electric operation (all at our UK factory).

PRINCIPLES OF OPERATION

OF THE

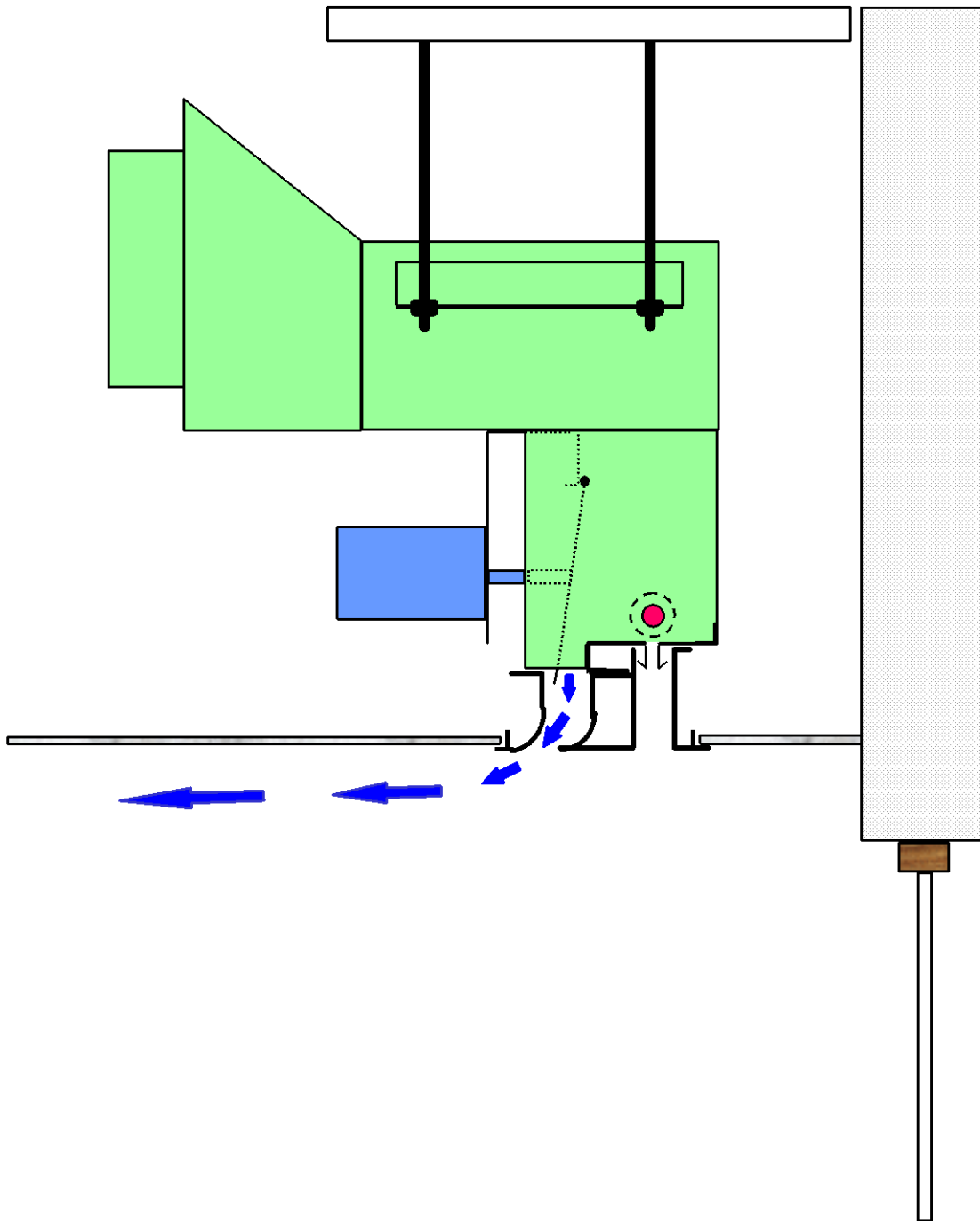
REDLAW

VAV SYSTEM

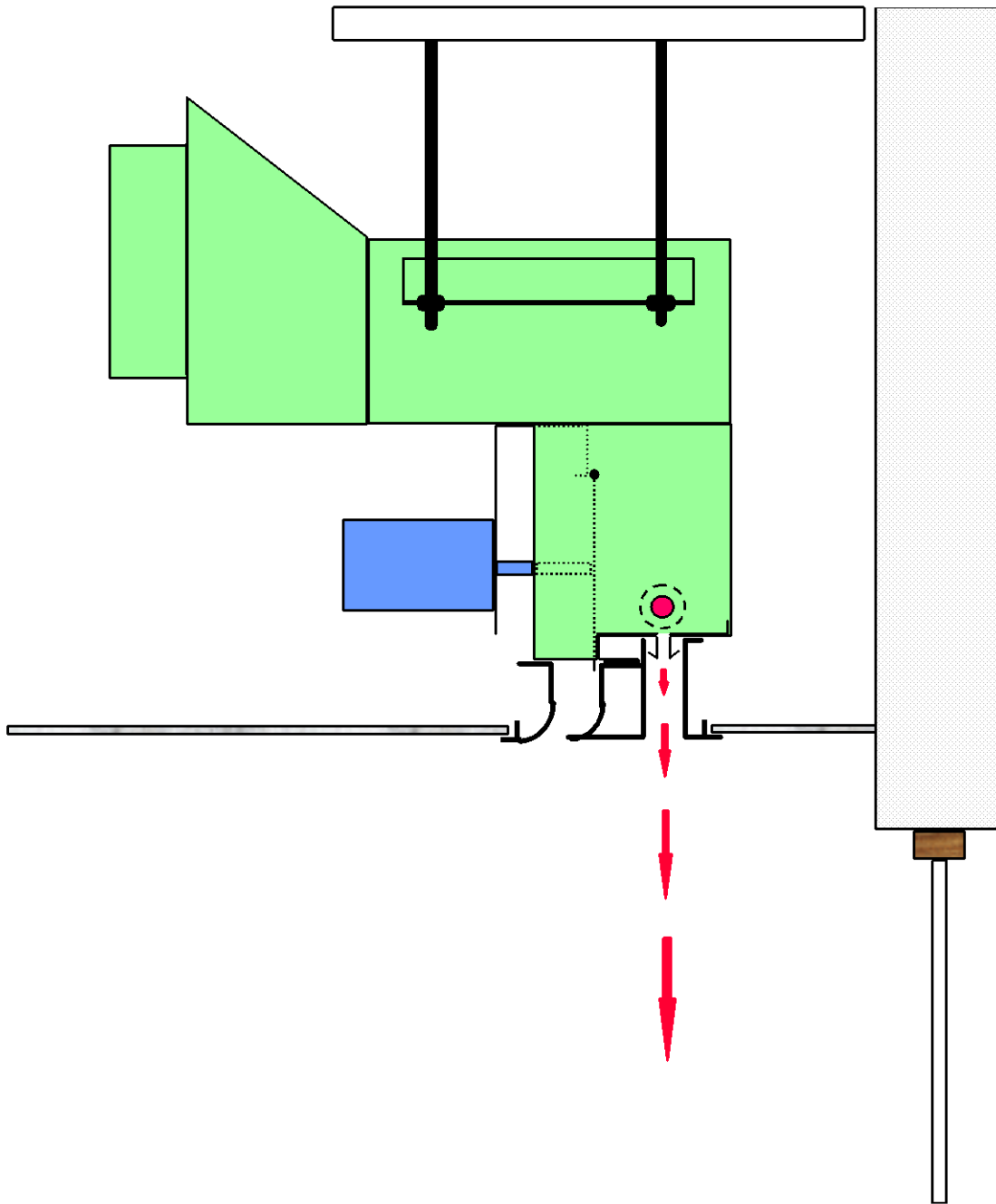
BARCOL-AIR REDLAW

51 NEWBRIDGE ROAD, BATH, BA1 3HF

Tel: 01225 310309, Fax: 01225 423422, Web: www.barcol-air.co.uk.

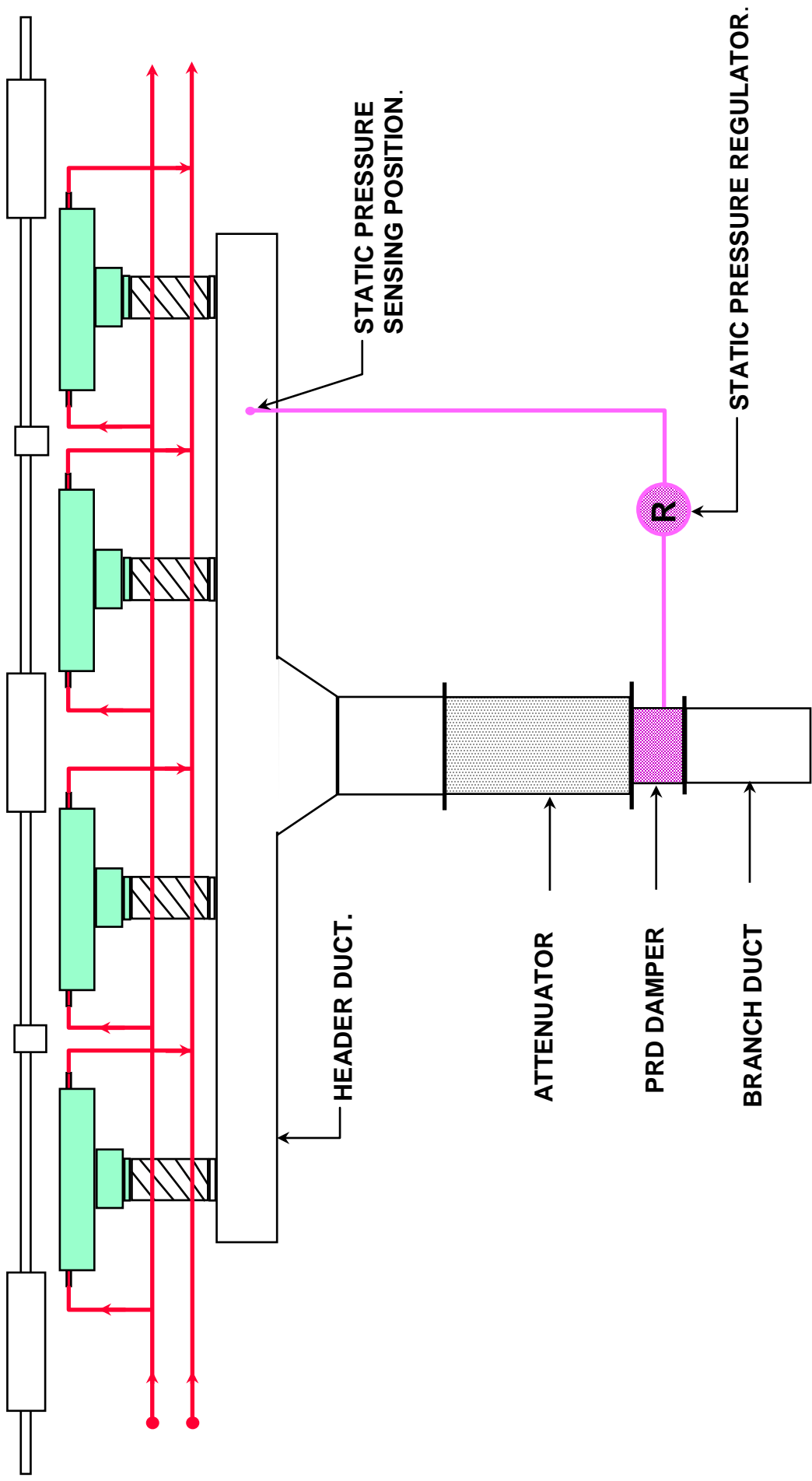


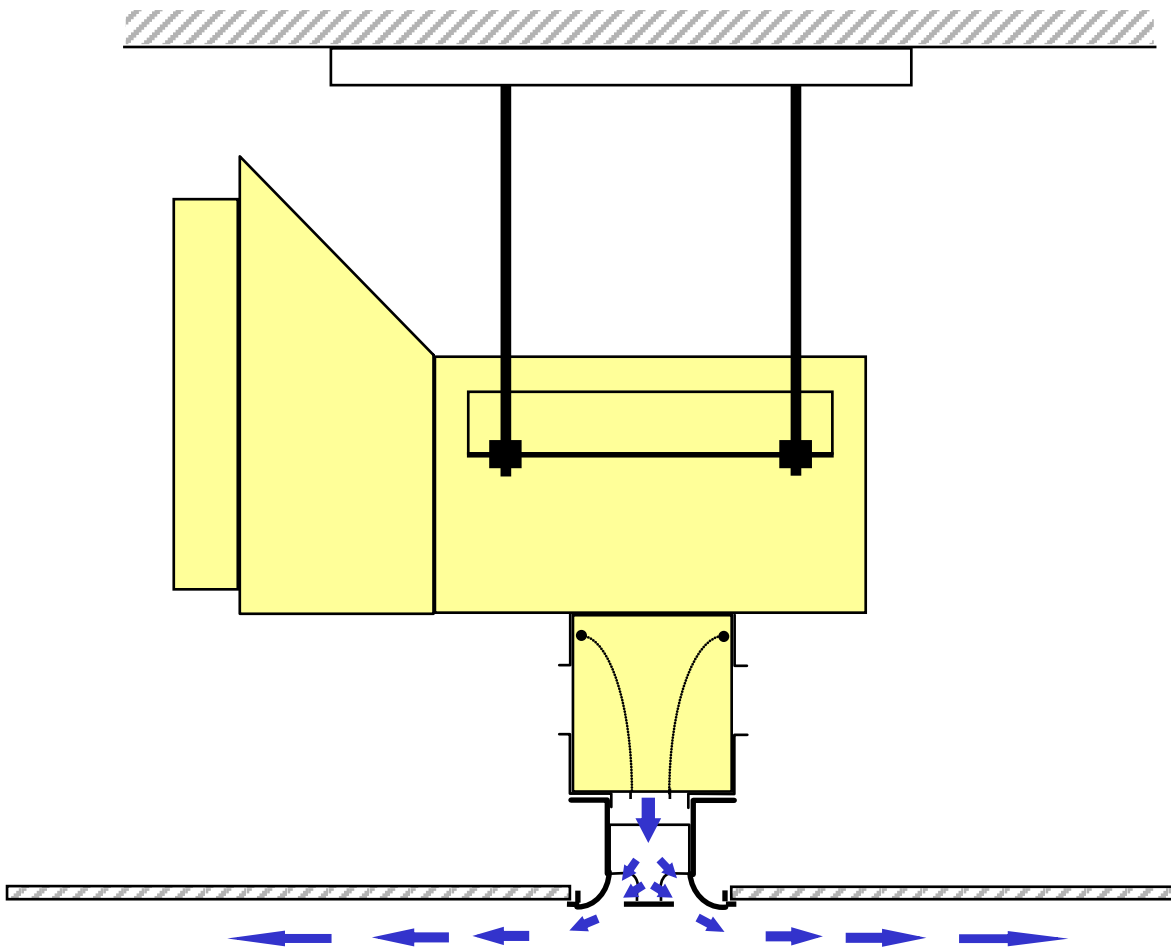
**CLM-W1 CONTROPLANE PERIMETER VAV
TERMINAL SHOWN IN THE COOLING MODE
SUPPLYING AIR HORIZONTALLY ACROSS THE
SPACE.**



**CLM-W1 CONTROPLANE PERIMETER VAV TERMINAL
SHOWN IN THE HEATING MODE SUPPLYING AIR
VERTICALLY DOWN THE BUILDING'S INTERIOR
FACADE.**

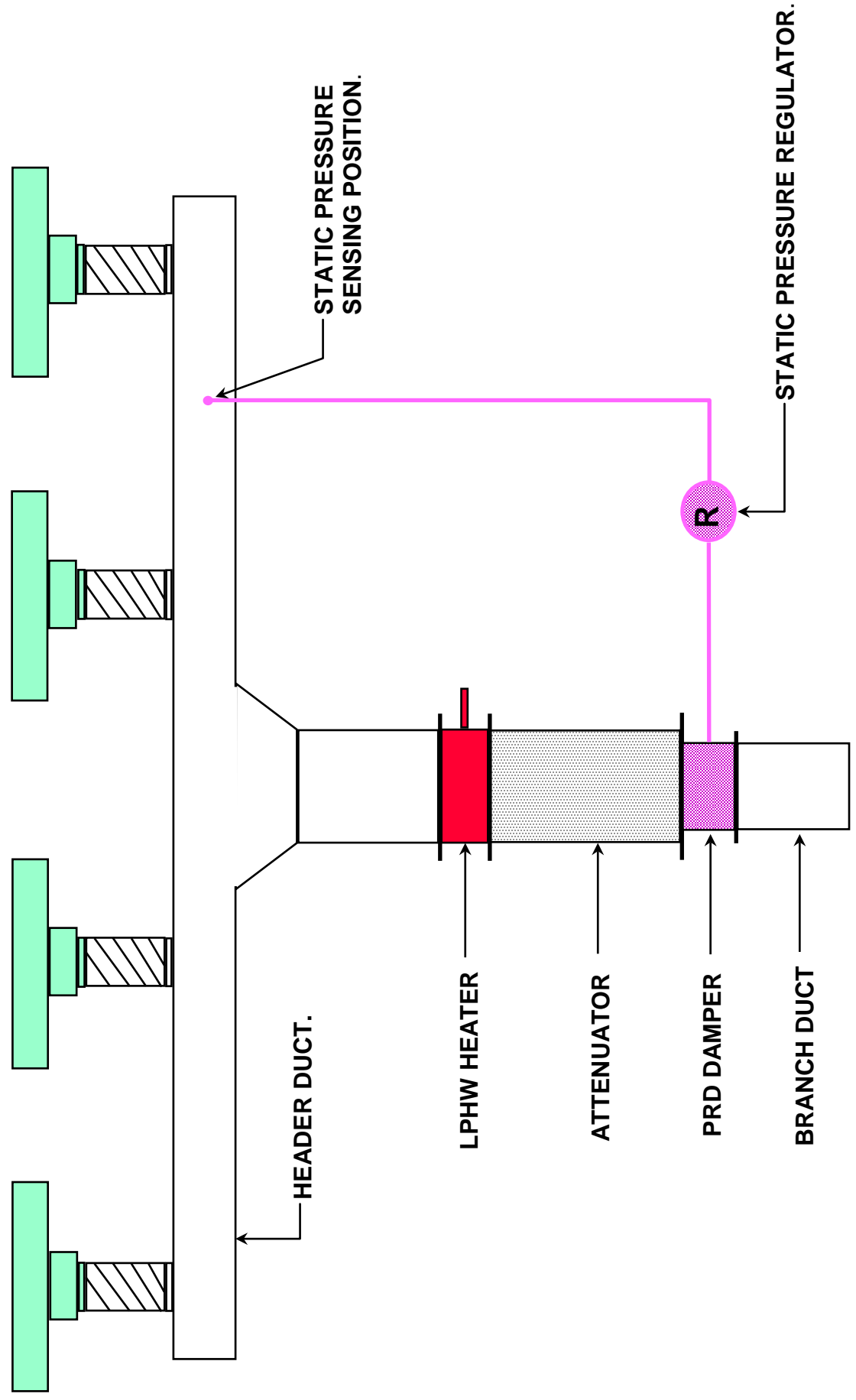
TYPICAL ARRANGEMENT OF BRANCH PERIMETER DUCTWORK SHOWING SPCS AND CONTROLPLANE TERMINALS.

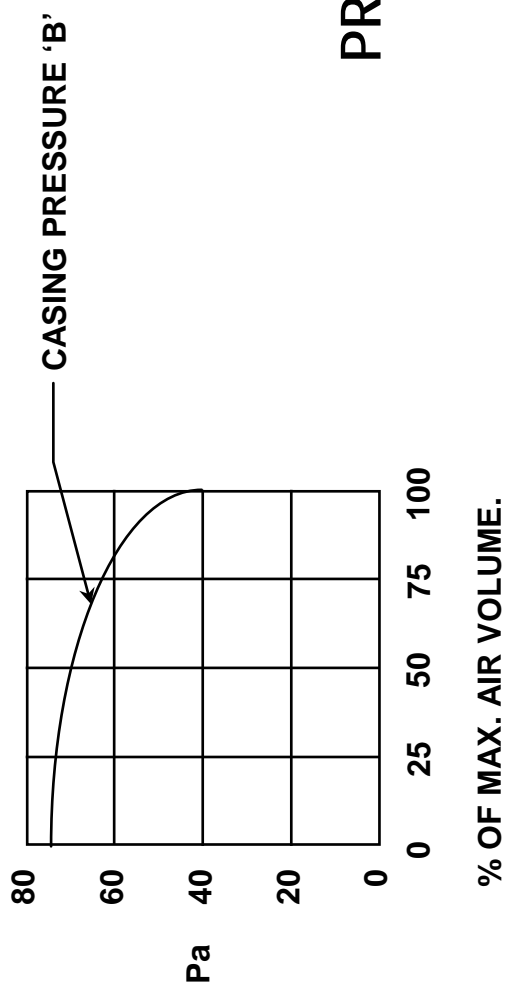
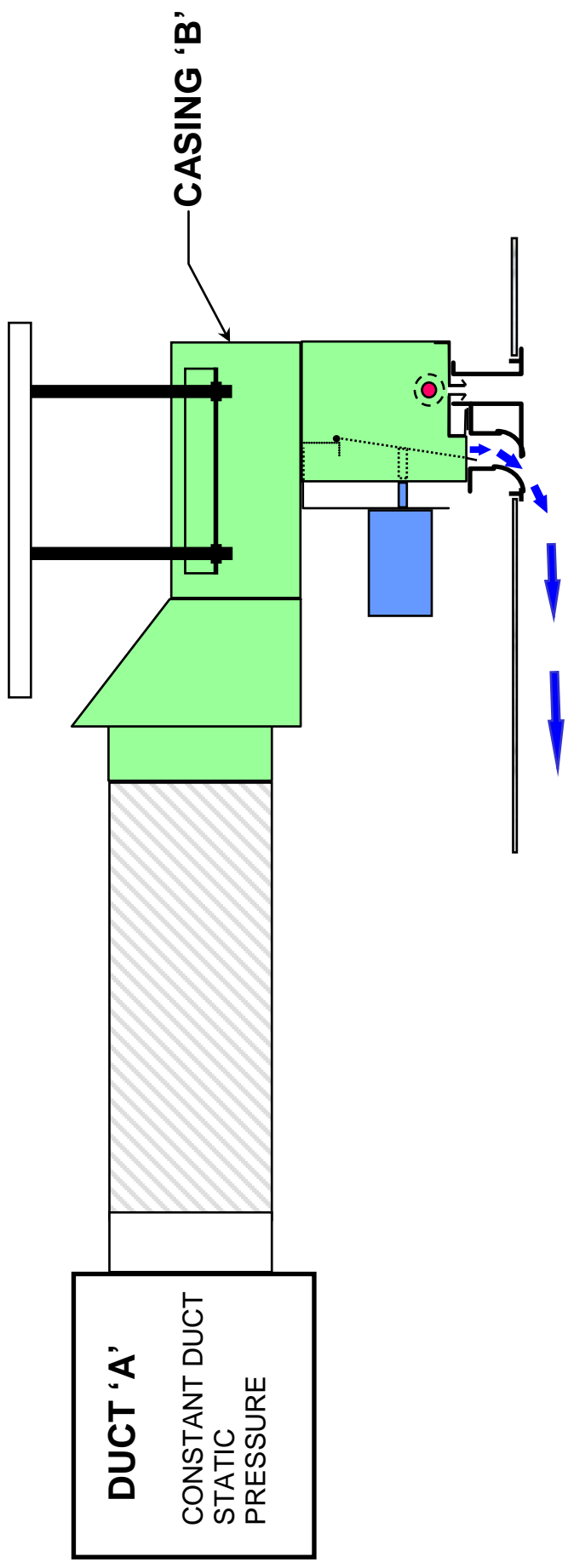




**TYPE KLM COOLING VAV TERMINAL FOR INTERNAL
AREAS SUPPLYING AIR HORIZONTALLY ACROSS
THE SPACE.**

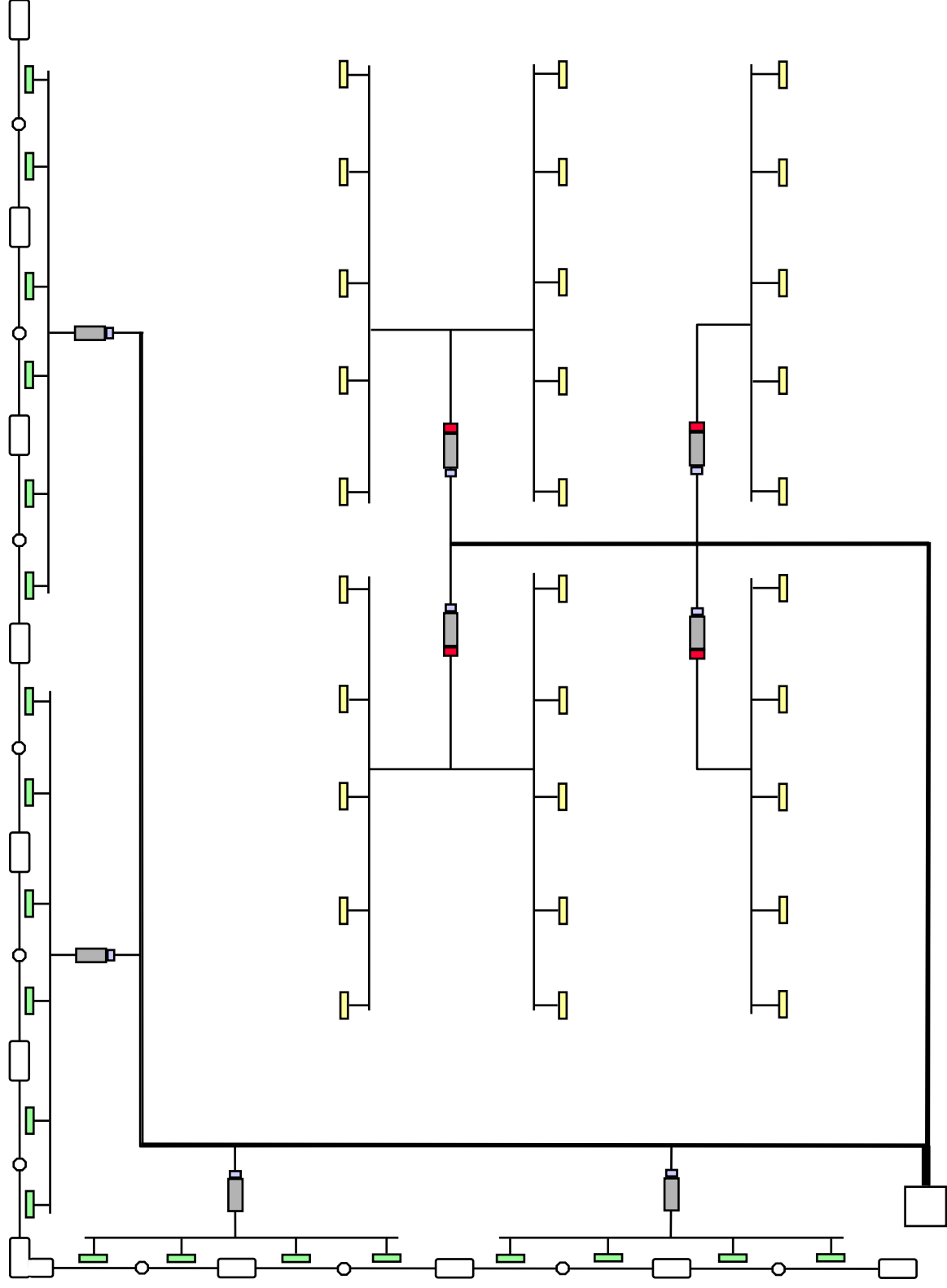
TYPICAL ARRANGEMENT OF BRANCH INTERNAL DUCTWORK
SHOWING SPCS AND KLM TERMINALS.





**PRINCIPLE OF AIRFLOW MODULATION
WITH REDLAW TERMINALS.**

TYPICAL TERMINAL LAYOUT SHOWING ARRANGEMENT OF PERIMETER (CLM) AND INTERNAL (KLM) DIFFUSERS AND ASSOCIATED DUCTWORK.



TYPICAL SUPPLY AIR HIGH/LOW PRESSURE DUCTWORK DISTRIBUTION ARRANGEMENT FOR THE REDLAW VAV SYSTEM.

