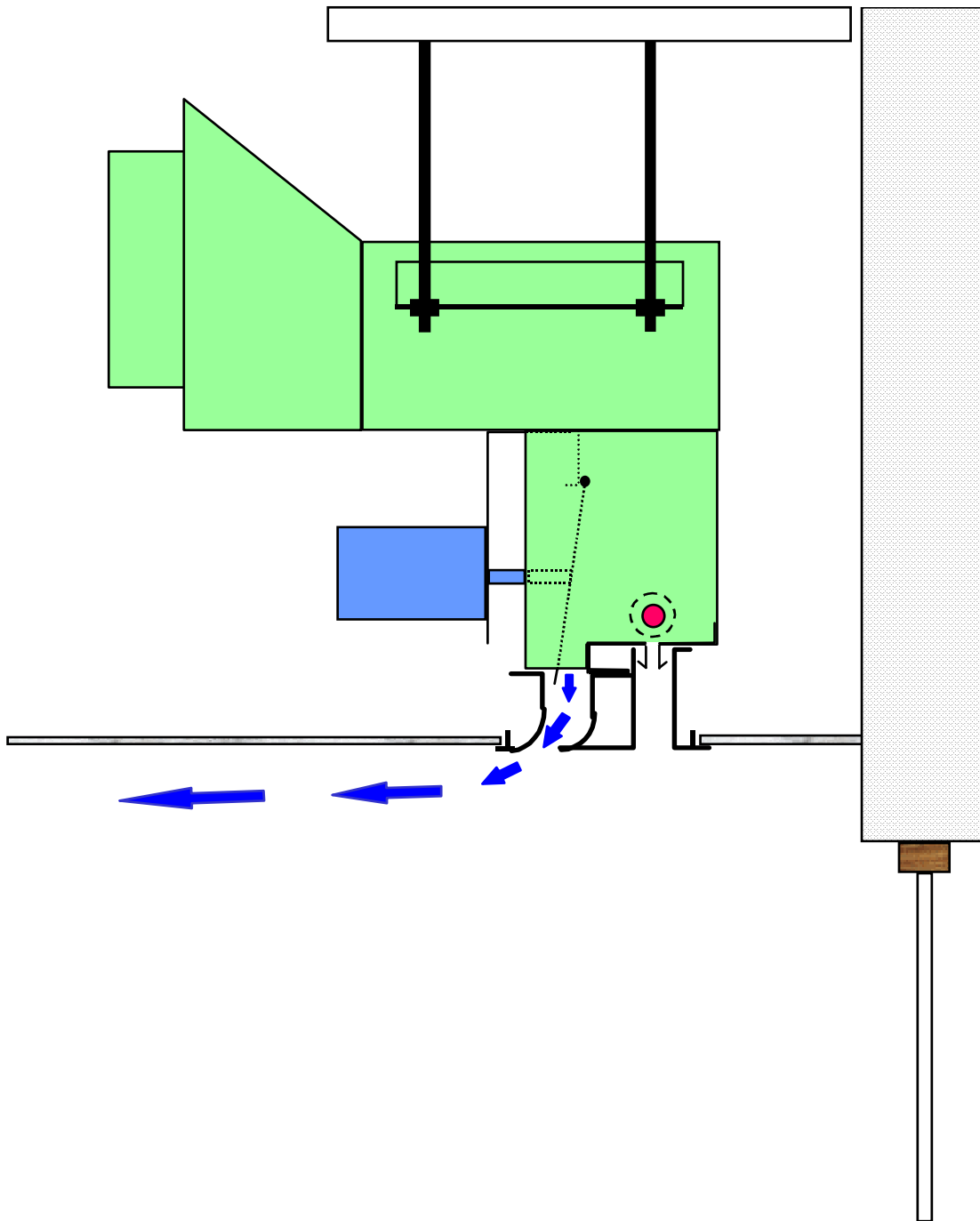


PRINCIPLES OF OPERATION

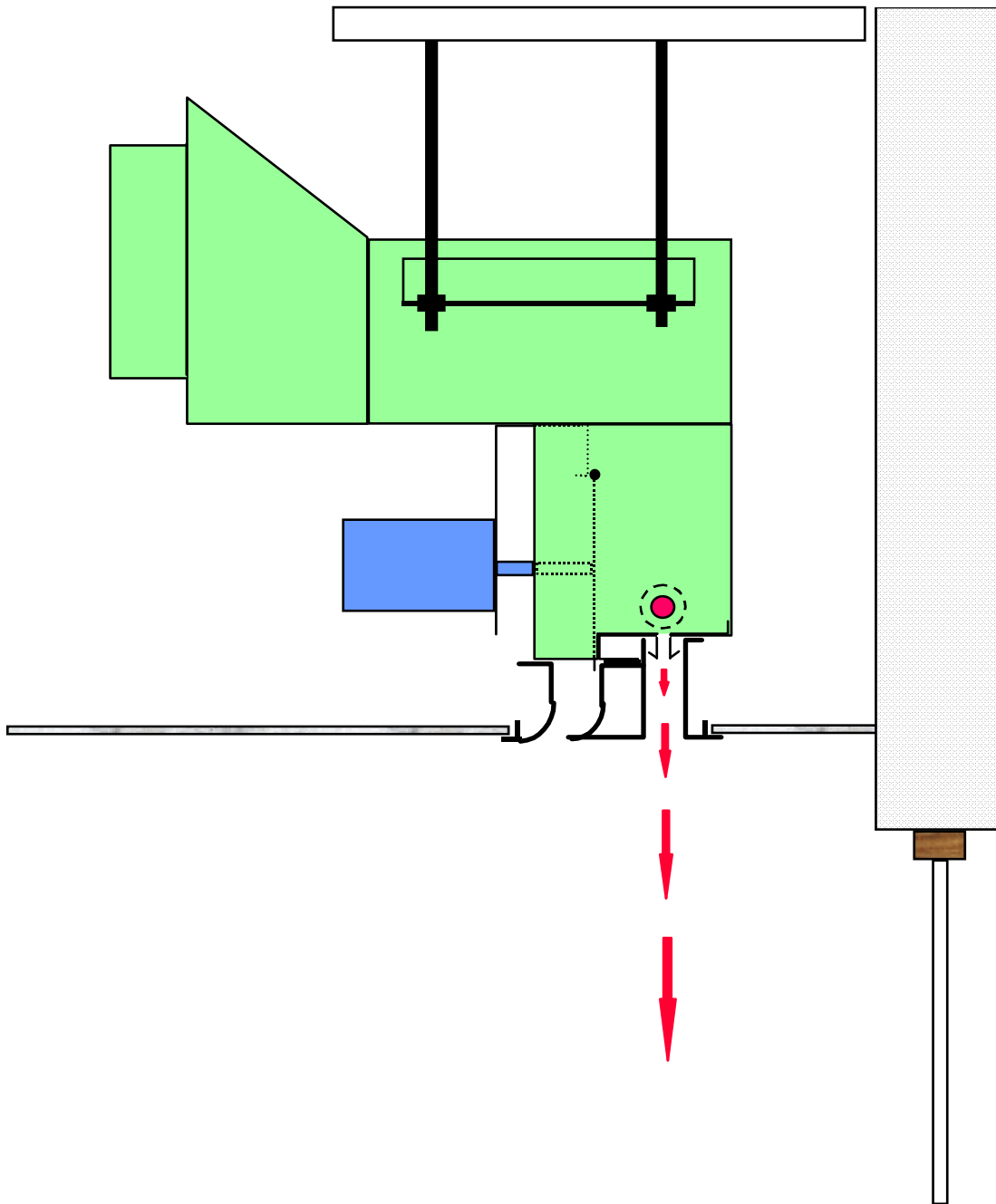
OF THE

REDLAW

VAV SYSTEM

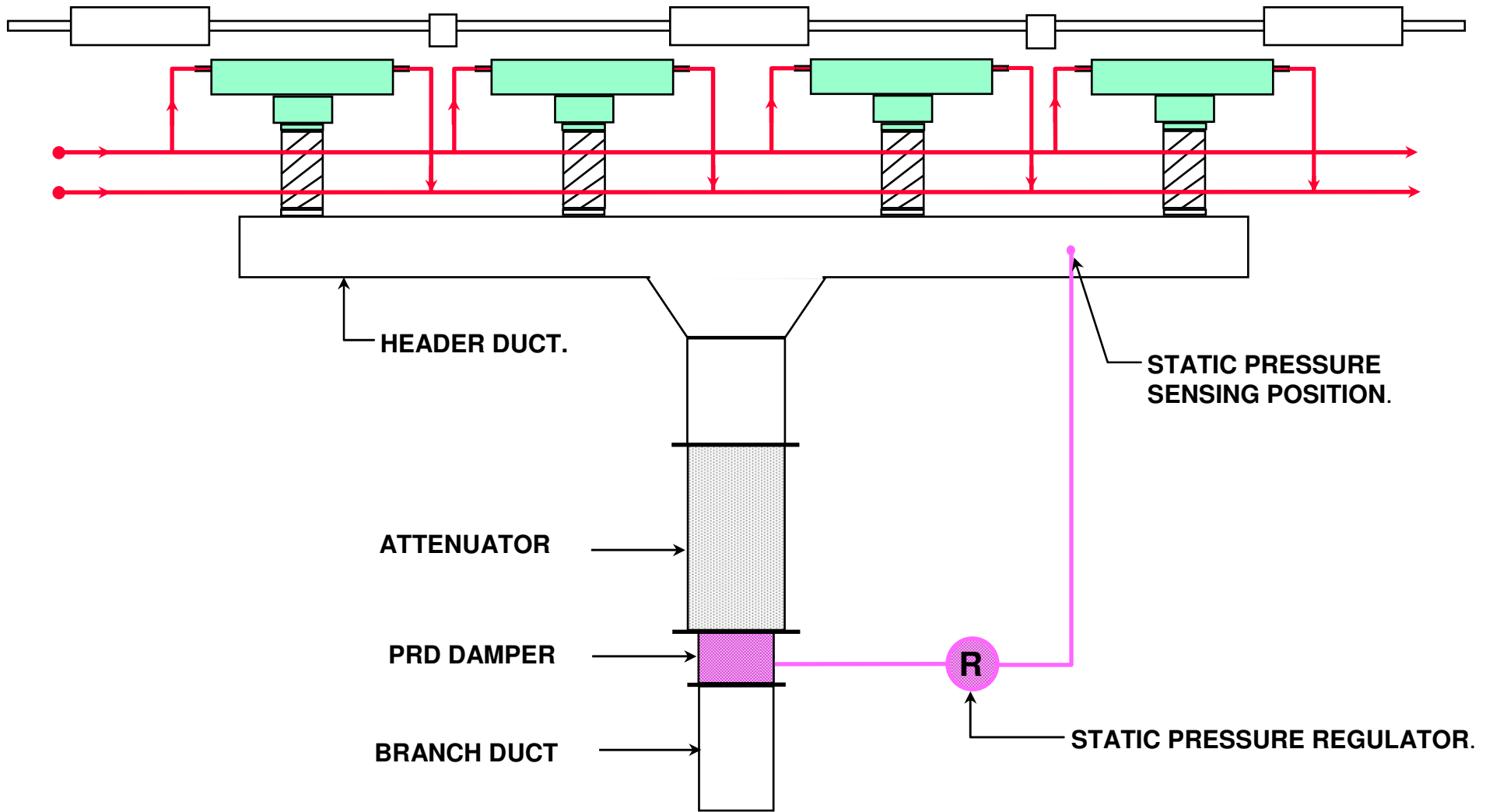


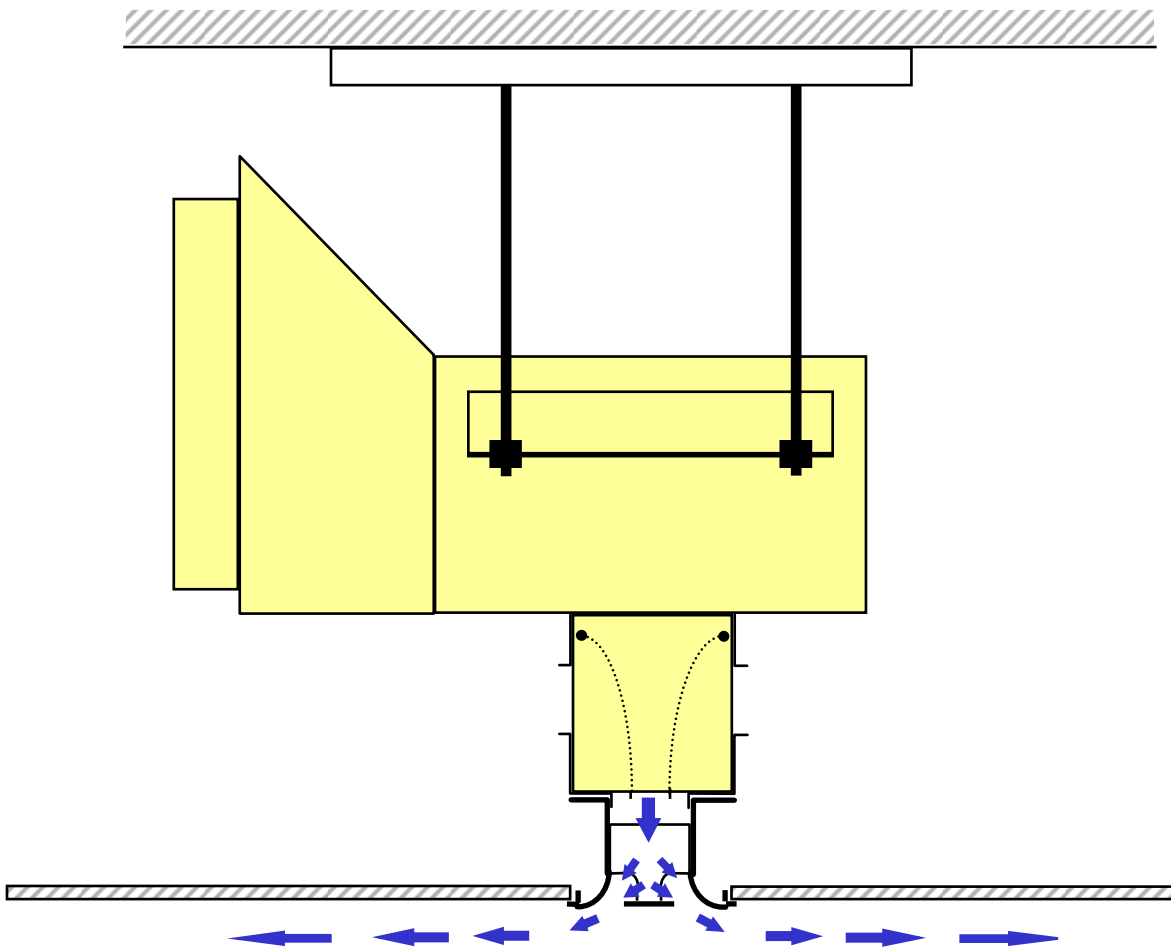
**CLM-W1 CONTROPLANE PERIMETER VAV  
TERMINAL SHOWN IN THE COOLING MODE  
SUPPLYING AIR HORIZONTALLY ACROSS THE  
SPACE.**



**CLM-W1 CONTROPLANE PERIMETER VAV TERMINAL  
SHOWN IN THE HEATING MODE SUPPLYING AIR  
VERTICALLY DOWN THE BUILDING'S INTERIOR  
FACADE.**

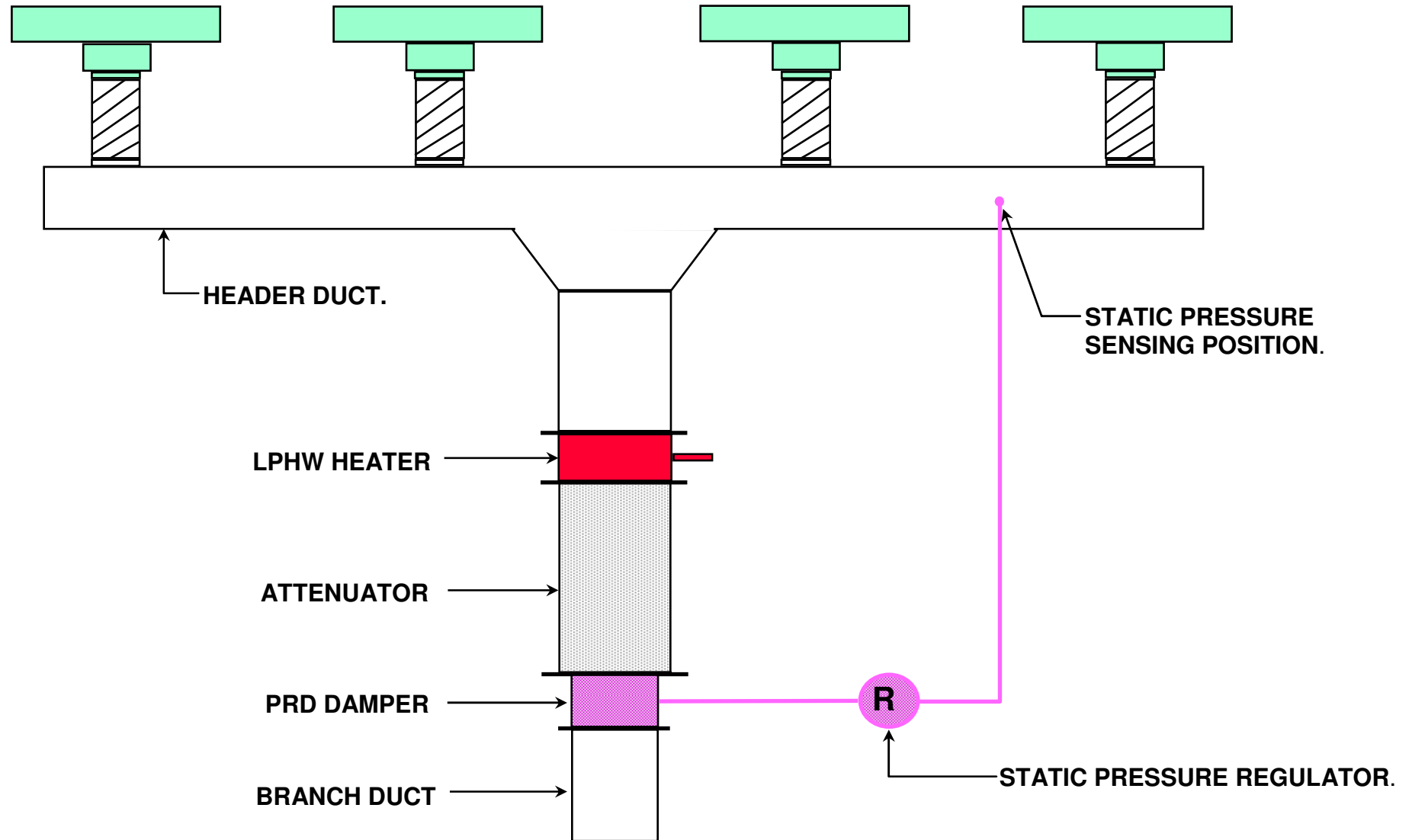
# TYPICAL ARRANGEMENT OF BRANCH PERIMETER DUCTWORK SHOWING SPCS AND CONTROPLANE TERMINALS.

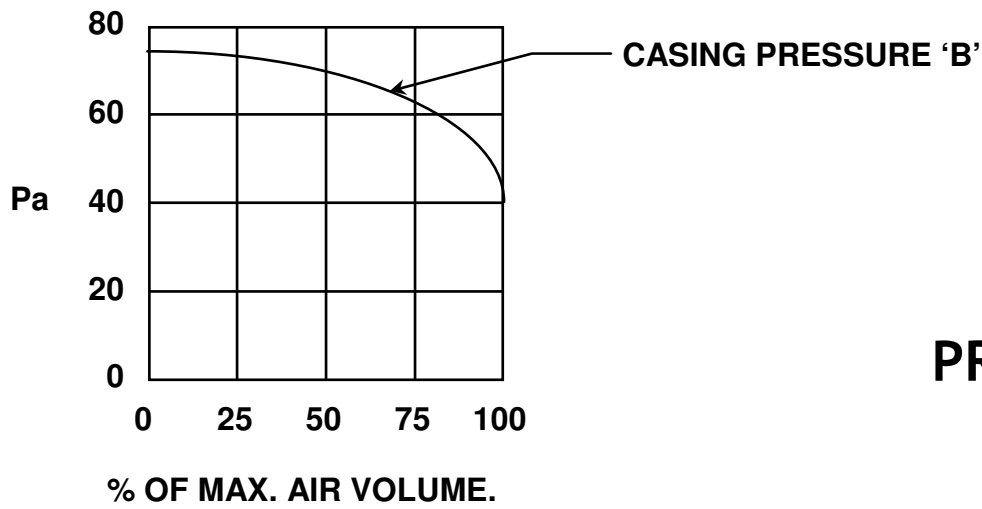
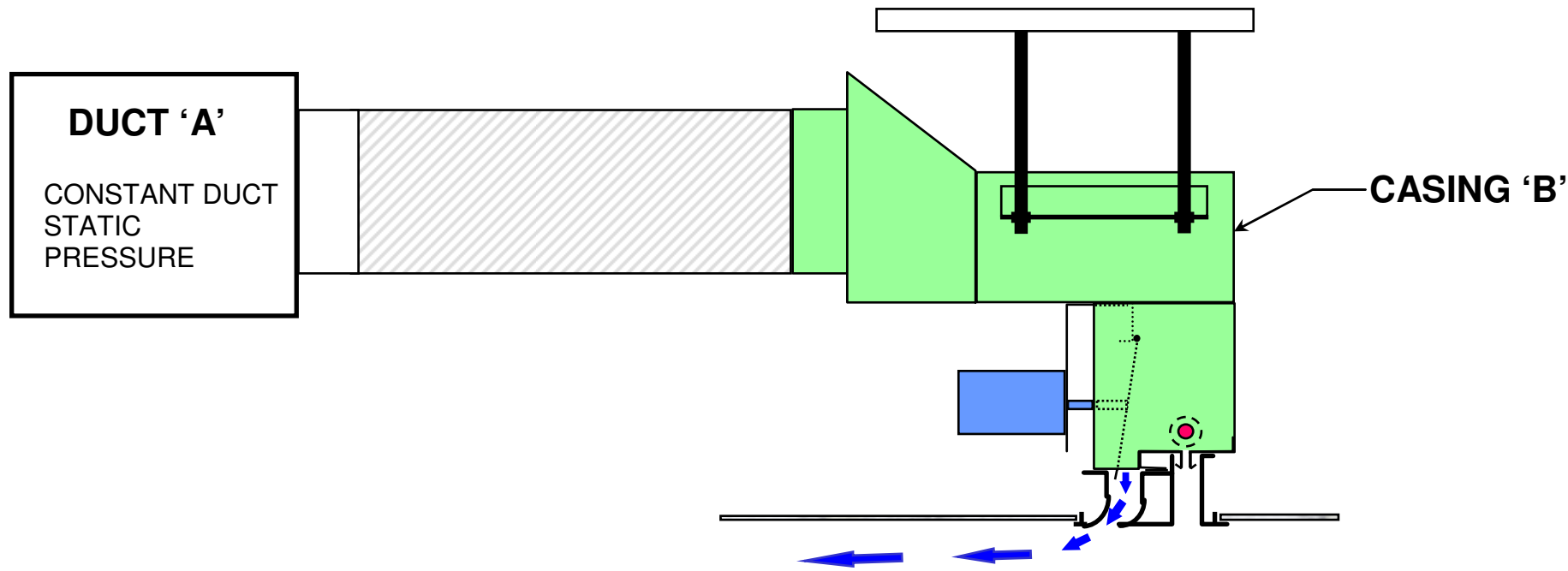




**TYPE KLM COOLING VAV TERMINAL FOR INTERNAL  
AREAS SUPPLYING AIR HORIZONTALLY ACROSS  
THE SPACE.**

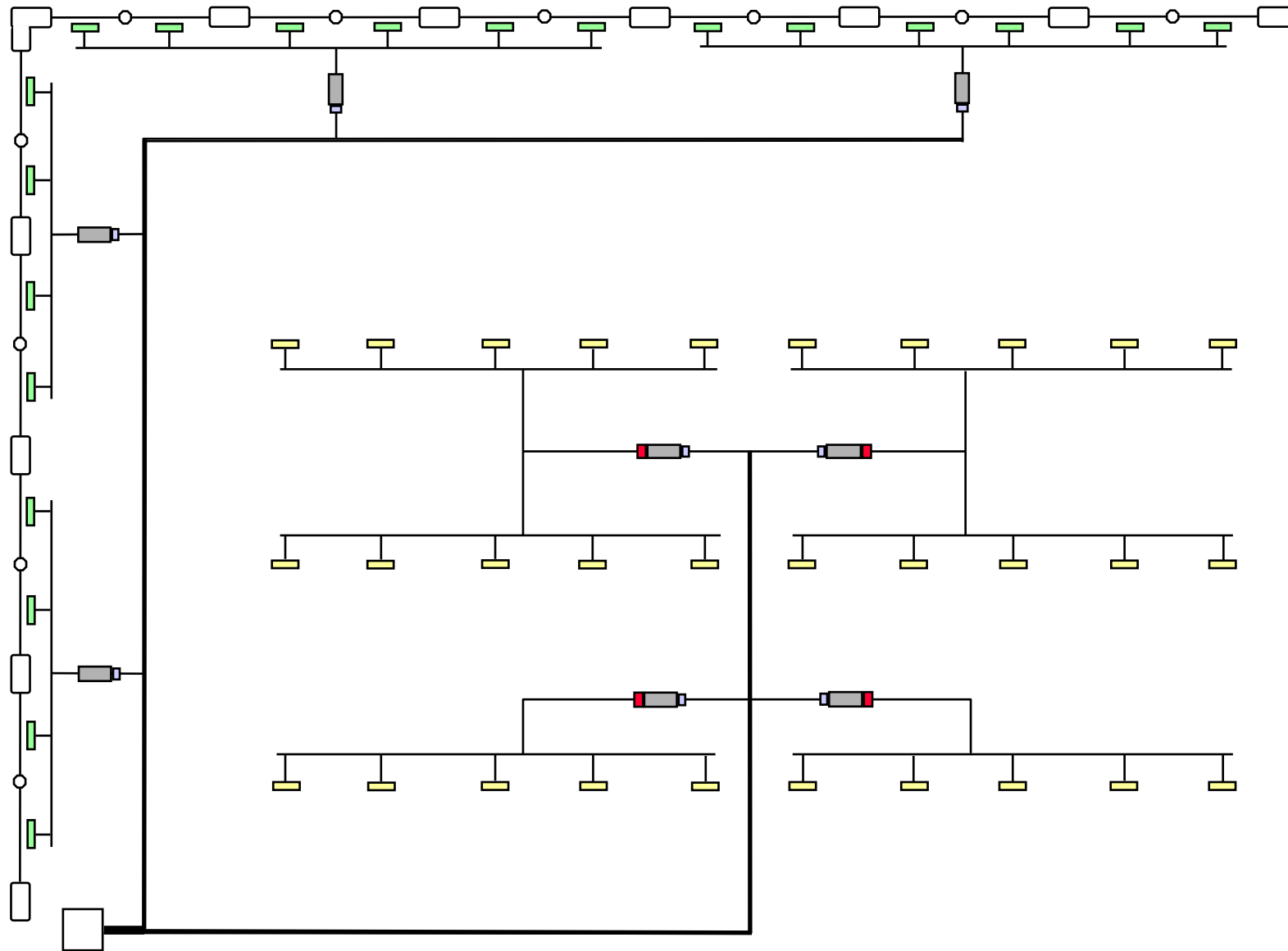
# TYPICAL ARRANGEMENT OF BRANCH INTERNAL DUCTWORK SHOWING SPCS AND KLM TERMINALS.





**PRINCIPLE OF AIRFLOW MODULATION  
WITH REDLAW TERMINALS.**

# TYPICAL TERMINAL LAYOUT SHOWING ARRANGEMENT OF PERIMETER (CLM) AND INTERNAL (KLM) DIFFUSERS AND ASSOCIATED DUCTWORK.



# TYPICAL SUPPLY AIR HIGH/LOW PRESSURE DUCTWORK DISTRIBUTION ARRANGEMENT FOR THE REDLAW VAV SYSTEM.

